



GRAY'S
INN

SUMMER
REVELS
at The Walks



OUR SEASONAL *Marquee*

For 2026, the marquee and its surroundings have a series of thoughtful enhancements designed to elevate both capacity and guest experience.

ALL MARQUEE EVENTS WILL INCLUDE:

- ▶ An integrated feature bar and a newly extended terrace with a second bar, improving service flow
- ▶ Lounge and dining areas designed with refreshed styling and a contemporary Mediterranean-inspired aesthetic
- ▶ Full technical production, including sound and lighting engineering
- ▶ A clear-roof reception space beneath the trees
- ▶ Ambient and architectural lighting
- ▶ Elegant restroom facilities
- ▶ A dedicated dancefloor

These enhancements, combined with the continued inclusion of event management, security, and manned cloakroom services, ensure a seamless and beautifully delivered event environment that reflects the high standards of Gray's Inn.





RECEPTIONS *Package*

Fresh, seasonal canapés and colourful bowl dishes.
Light, vibrant and ideal for warm evenings in The Walks.

PACKAGE INCLUSIONS:

- ▶ Exclusive use of The Walks and marquee from 18:00–23:00
- ▶ Arrival reception of Prosecco or Pimm's (1 hour)
- ▶ Selection of four canapés and four bowl dishes
- ▶ Unlimited wine, beer and soft drinks for 3.5 hours
- ▶ Garden games bundle

Prices from £146

Prices are per person plus VAT. Package based on 300 guests.
Minimum numbers apply.



FOOD STALLS *Package*

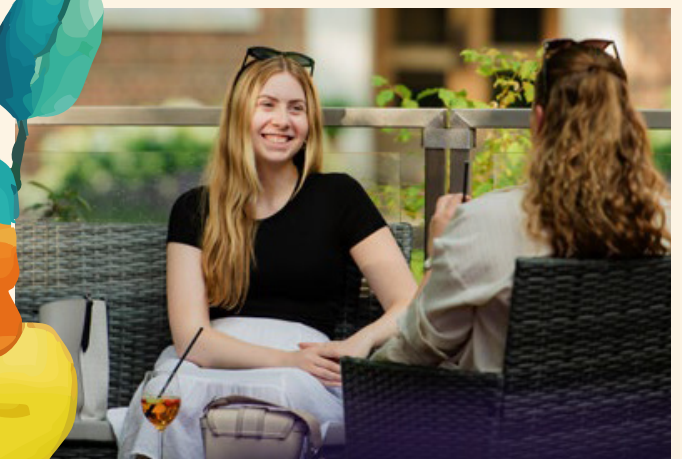
A vibrant selection of chef-led food stalls offering bold, fresh flavours. Designed for effortless flow and relaxed summer networking.

PACKAGE INCLUSIONS:

- ▶ Exclusive use of The Walks and marquee from 18:00–23:00
- ▶ Arrival reception of Prosecco or Pimm's (1 hour)
- ▶ Choice of three food stall menus for a vibrant, interactive dining experience
- ▶ Unlimited wine, beer and soft drinks (3.5 hours)
- ▶ Garden games bundle

Prices from £168

Prices are per person plus VAT. Package based on 300 guests. Minimum numbers apply.





FAMILY FUN DAYS *Packages*

FAMILY FUN DAYS

(Saturday and Sunday, 12:00–17:00 or 13.00–18.00)

Ideal for corporate family days, community celebrations or summer gatherings. Create a fun, family-friendly atmosphere with a selection of child-suitable rides and entertainment.

ADULT PACKAGE INCLUSIONS

- ▶ Exclusive use of The Walks and Marquee
- ▶ BBQ menu featuring three grilled mains, one classic side, two seasonal salads and two summer desserts
- ▶ Unlimited wine, beer and soft drinks (3.5 hours)
- ▶ Garden games bundle

Prices from £141 per adult

KIDS' PACKAGE INCLUSIONS

- ▶ Kid-friendly BBQ selection
- ▶ All-inclusive soft drinks and juices with water stations available throughout

Price from £65 per child

ENTERTAINMENT ADD-ON

- ▶ Children's Carousel or Helter Skelter.
- ▶ Choice of one additional mini attraction: Mini Chair-O-Planes, Mini Ferris Wheel or Tea Cups
- ▶ Professional face and body painters
- ▶ Mini bumper cars

Prices from £22 per adult per add-on

Prices are per person plus VAT. Package based on 300 guests. Options can be tailored to guest numbers and age groups. Minimum numbers apply.



AWARDS & DINNERS *Package*

For dinners and award ceremonies of up to 250 guests, hosted with round tables and Chiavari chairs.

PACKAGE INCLUSIONS:

- ▶ Welcome reception of Prosecco or Pimm's per guest (1 hour)
- ▶ Three-course fine dining menu
- ▶ Tea, coffee and petit fours to finish
- ▶ Half bottle of wine per guest
- ▶ All crockery, glassware and cutlery included
- ▶ Account or cash bar available after dinner

AV PACKAGE INCLUSIONS:

- ▶ Two large screens
- ▶ PA system with two handheld microphones
- ▶ Stage and lectern with microphone
- ▶ Custom gobos

Price £193

Prices are per person plus VAT. Package based on 200 guests. Minimum numbers apply.





ENTERTAINMENT *Packages*

If you would like to explore additional enhancements to your event, please enquire with the sales team to find out more.

SUMMER REVELS ENTERTAINMENT PACKAGE

Designed to set the tone for a lively and memorable summer celebration.

- ▶ Photobooth with unlimited digital captures
- ▶ Live acoustic set on arrival (two 30 minute sets)
- ▶ Professional DJ to take the event into the evening

ROAMING ENTERTAINMENT PACKAGE

A lively mix of roaming acts designed to engage guests throughout the event.

- ▶ Two roaming bands (two 30minute sets)
- ▶ Close-up magician
- ▶ Caricaturist
- ▶ Polaroid roaming photographer

FUNFAIR PACKAGE

Bring a vibrant celebratory atmosphere to your event with a curated selection of classic funfair attractions.

- ▶ One signature funfair attraction: Carousel or Funfair Wheel
- ▶ One classic ride: Adult Swing Boats or Traditional Chair-O-Planes
- ▶ Four funfair stalls (selected from eleven available options)
- ▶ Cotton candy stall
- ▶ Popcorn stall


ARCADE PACKAGE (indoor & outdoor games)

Light-hearted games and interactive challenges that bring energy and engagement to both indoor and outdoor spaces.

- ▶ Pluck-a-Duck
- ▶ Giant Buzzer Wire
- ▶ Retro Arcade Console
- ▶ Strike-a-Light
- ▶ Whack-a-Mole
- ▶ Pixel Play Arcade

INTERACTIVE SPORTS ZONE PACKAGE

A mix of classic and contemporary games designed to encourage friendly competition and guest interaction.

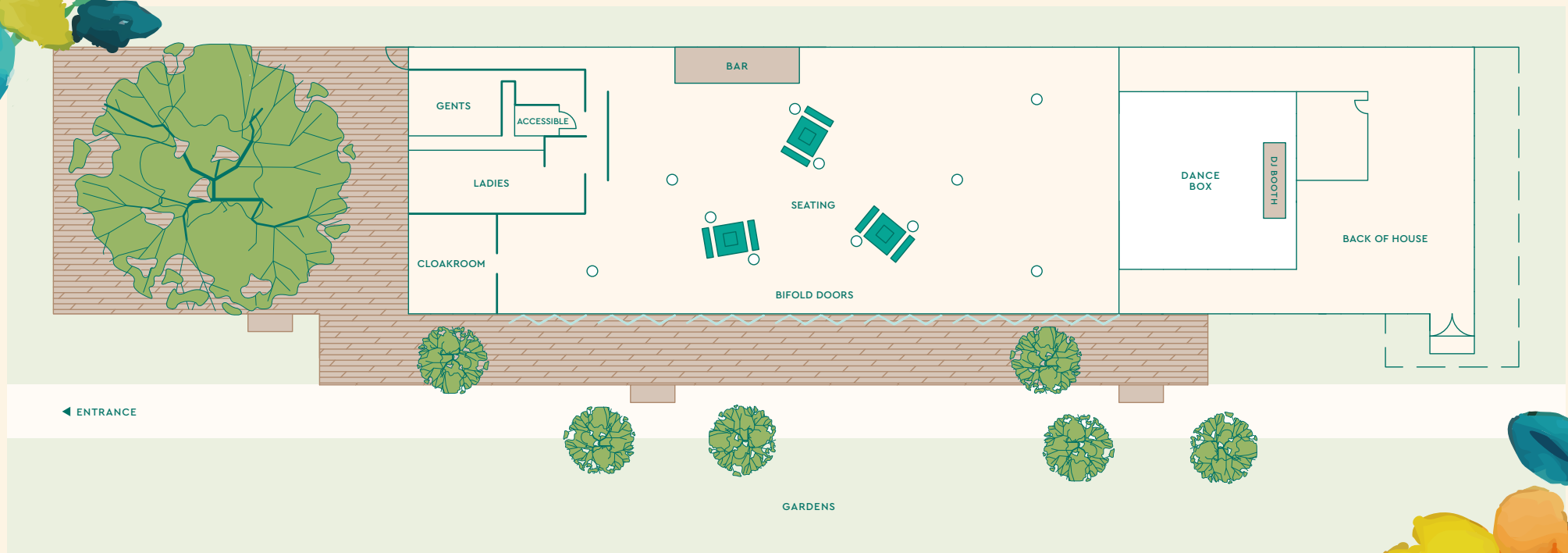
- ▶ Mini Golf (9 holes) (back of the garden)
 - ▶ 2x Basketball / Slam Dunk (back of the garden)
 - ▶ 2x Table Tennis
 - ▶ 2x Foosball
 - ▶ Skittle Alley
- 

MARQUEE *Layout*

The standard set up for a summer marquee event is the standing reception. The poseur tables will be placed outside if weather conditions permit, otherwise they will be placed inside.

- ▶ Standing Reception (in marquee) 100–600 guests
- ▶ Standing Reception (including gardens) 600–1000 guests
- ▶ Seated Dinner 100–250 guests
- ▶ Theatre Style 400 guests

Additional access or extended hours can be accommodated on request.



The MARQUEE

The refreshed Summer Marquee introduces a beautifully enhanced layout and atmosphere designed to impress from arrival to last dance.

A new wraparound front terrace connects seamlessly to the marquee entrance, featuring cocktail tables, rattan seating and a stylish welcome bar ideal for cocktails and live entertainment. Guests are greeted by a dedicated photo moment with a faux floral wall and branded neon sign, while interiors are softened with warmer lighting, lighter curtains and a refined colour palette. Elegant modular sofas replace traditional Chesterfields for flexible layouts, complemented by a redesigned, brandable bar. The dance experience is elevated with a refreshed Dancebox, black gloss dancefloor, sleek DJ booth and a reimagined theatrical front curtain, creating a striking focal point and a truly cohesive, contemporary space.








OUR *Location*

The Walks Gardens Fulwood Place London WC1R 5ET
What 3 Words ///MASH.SOCCEER.HARP



8 South Square, London WC1R 5ET

+44 (0)20 7458 7960 | venue@graysinn.org.uk | www.graysinnvenue.co.uk

   @graysinnvenue

