



GRAY'S  
INN

---

Summer  
PARTIES

IN THE HEART OF LONDON





# Summer PARTIES

IN THE HEART OF LONDON

A hidden gem located in the heart of Central London and less than five minutes' walk from Chancery Lane station, The Walks at Gray's Inn offer five acres of private gardens – the perfect summer party setting.

During June and July, a grand and elegant custom-built marquee will be placed in The Walks. A magnificent interior emulates the splendour of the Inn's rich history, offering a charismatic space with a clean and crisp design.

The clear roof of the reception area creates a charming setting under the beautifully lit trees for guests to enjoy a refreshing welcome drink, before indulging in delicious food and dancing the night away on the dancefloor.



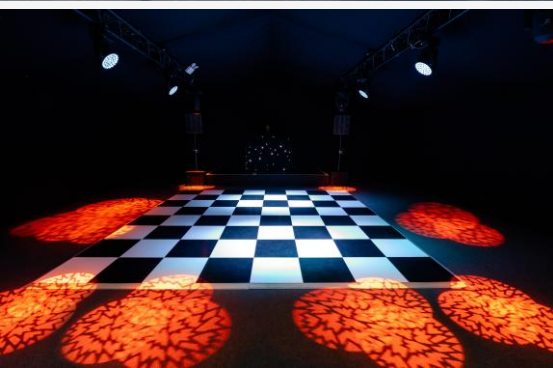




# OUR Marquee

## ALL MARQUEE EVENTS WILL INCLUDE:

- Full event management
- Event security
- Manned cloakroom
- Integrated bar set up
- Elegant toilets with attendants
- Lounge, dining and garden furniture
- Ambient lighting (up-lighting and colour wash)
- Sound and lighting engineer
- PA system and two handheld microphones
- Dancefloor



## OUR SUPPLIERS

Our handpicked suppliers have been carefully selected to deliver a creative and inspiring event, complementing our offer at Gray's Inn. Our supplier list encompasses every aspect of event management, from AV and outdoor games, to florists.

We are also very happy to liaise with your preferred team.

Should you require further information, contact our team at [venue@graysinn.org.uk](mailto:venue@graysinn.org.uk)



# Reception

## PACKAGE

Choose from our contemporary canapés or delightful bowl food option, served to your guests whilst they mingle and enjoy the ambience of The Walks.

### PACKAGE INCLUSIONS

Exclusive venue hire 18:00–23:00

Two glasses of sparkling wine or Pimm’s per person on arrival (1 hour)

Three canapés and three bowls per person

Unlimited wine, beer and soft drinks (3.5 hours)

Prices from £129\* per person

### RECEPTION DRINKS ENHANCEMENTS

- English gin and tonic reception
- English sparkling wine reception
- Italian sparkling wine reception
- Champagne reception

Supplement prices on request

\*Prices are per person PLUS VAT.  
Package based on 300 guests.  
Minimum numbers apply.







# Barbeque

## PACKAGE



Enjoy our BBQs for a real British summer feel.

### BBQ PACKAGE INCLUSIONS

Exclusive venue hire 18:00–23:00

Two glasses of sparkling wine or Pimm's per person on arrival (1 hour)

Buffet style BBQ to include three mains, two sides and two desserts

Unlimited wine, beer and soft drinks (3.5 hours)

Prices from £130\* per person

### FAMILY FUN DAY BBQ PACKAGE

Exclusive venue hire 12:00–16:00 OR 17:00–22:00 Saturday or Sunday

#### For the Adults (18+)

Buffet style BBQ to include two mains, two sides and two desserts

Unlimited wine, beer and soft drinks (3.5 hours)

Prices from £89\* per person

#### For the Children (-17)

Buffet style BBQ to include two mains, fries, steamed carrots and broccoli, followed by ice cream with fruit and toppings Unlimited soft drinks (3.5 hours)

Prices from £65\* per person

Food Stalls and additional package options available upon request.

\*Prices are per person PLUS VAT.

Package based on 300 guests.

Minimum numbers apply.





# Private DINNERS

For a more intimate evening with your guests, or as a unique location for your wedding reception, our marquee is perfect for up to 250 guests. They can enjoy an alfresco drinks reception followed by an indulgent three course dining experience.

## PACKAGE INCLUSIONS

Exclusive venue hire 6pm – 11pm

Two glasses of sparkling wine or Pimm's per person on arrival (1 hour)

Three course dinner

Half a bottle of house wine per person

Tea, coffee and petit fours

Unlimited still and sparkling water

Prices from £149\* per person

Bespoke packages are available. Should you require further information, contact our team at [venue@graysinn.org.uk](mailto:venue@graysinn.org.uk)

\*Prices are per person PLUS VAT.  
Package based on 150 guests.  
Minimum numbers apply.







# Wedding

## RECEPTIONS

The Walks is a peaceful and unique setting for your special day.

Our luxury, modern marquee, is a unique location for summer wedding receptions, alfresco drinks and entertaining your guests in the breathtaking surroundings of the perfectly maintained private five-acre gardens, all tucked away in the heart of Central London.

Our expert events team of planners, operators and chefs offer a professional yet personal approach when helping you plan your reception. We will ensure you receive service tailored specifically to you and your partner, helping to make it the day you have both dreamed of.

For more information on weddings at The Walks please contact our team at [venue@graysinn.org.uk](mailto:venue@graysinn.org.uk)



# MARQUEE

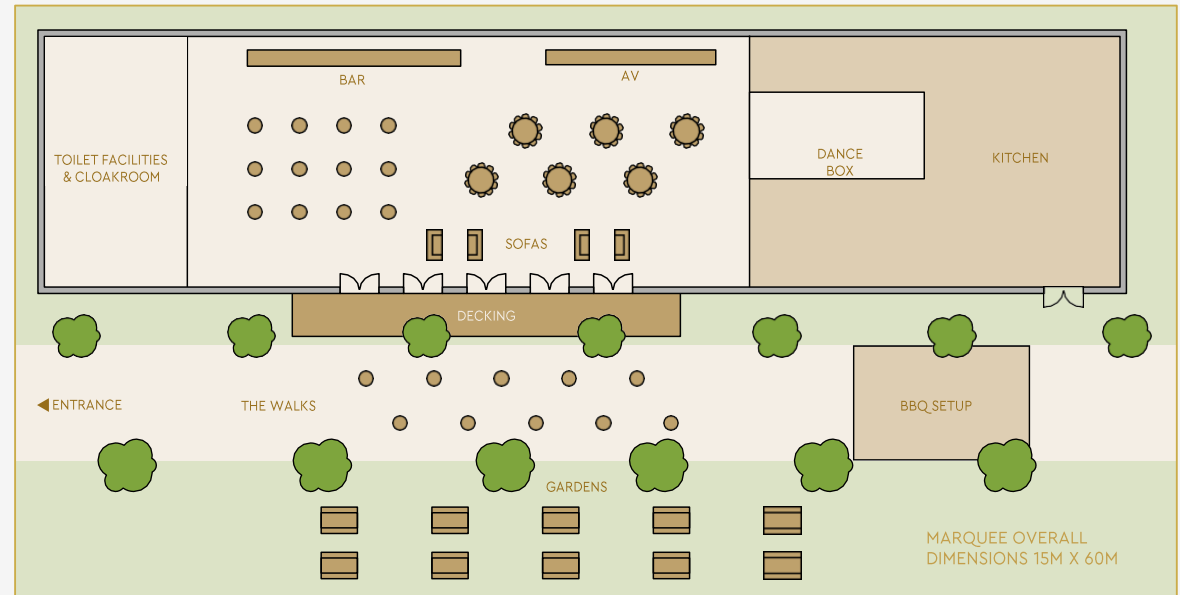
## Layout

The standard set up for a summer marquee event is the standing reception. The poseur tables will be placed outside if weather conditions permit, otherwise they will be placed inside.

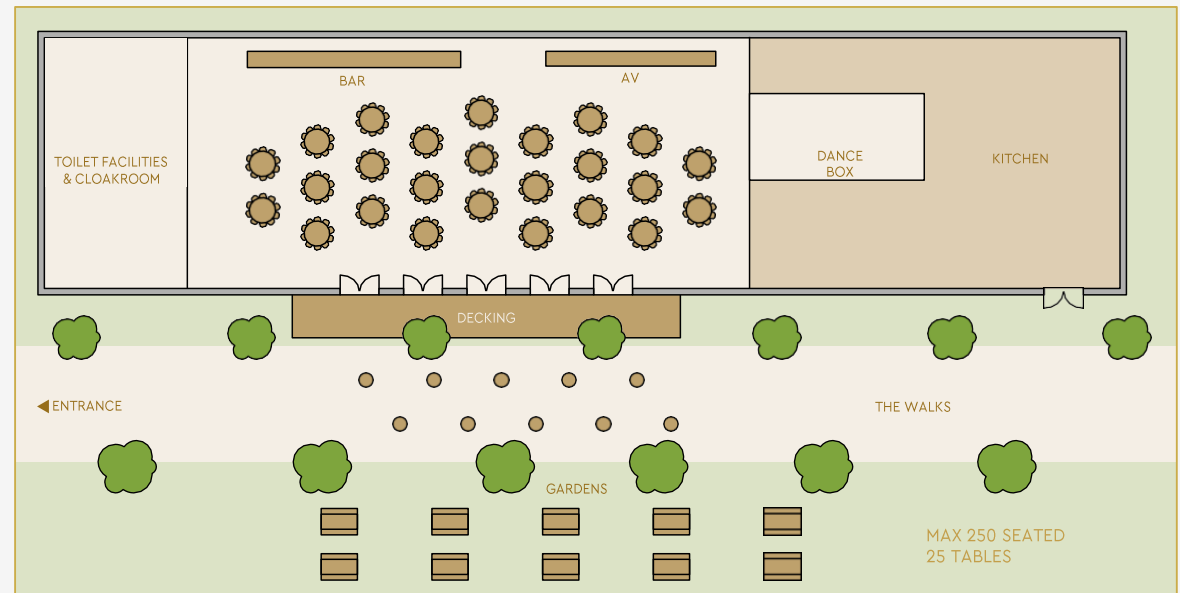
Monday – Friday 18:00–23:00  
 Saturday – Sunday 12:00–16:00  
 17:00–22:30

| EVENT TYPE                             | CAPACITIES |
|--|------------|
| Standing Reception (in marquee)        | 100–600    |
| Standing Reception (including gardens) | 600–1,000  |
| Seated Dinner                          | 100–250    |
| Weddings Receptions with Seated Dinner | 90–200     |
| Theatre Style                          | 400        |

### STANDING RECEPTIONS



### SEATED EVENTS







OUR *Location*

8 South Square  
London  
WC1R 5ET

- ⊕ Chancery Lane 2-mins walk
- ⊕ Holborn 8-mins walk
- ⊕ Farringdon 9-mins walk







# GRAY'S INN

---

8 South Square, London WC1R 5ET  
+44 (0)20 7458 7960 | [venue@graysinn.org.uk](mailto:venue@graysinn.org.uk)

[www.graysinnvenue.co.uk](http://www.graysinnvenue.co.uk)

[!\[\]\(c3d993ca47bfe2a953c700506ce31fa0\_img.jpg\)](#) [!\[\]\(c468cde8f04e2e2a6ba3c2a373e05c45\_img.jpg\)](#) [!\[\]\(bb556800b100164a948e6987b050d670\_img.jpg\)](#) @graysinnvenue